

THE DELAWARE COUNTY

ADVOCATE

SEPTEMBER, 1939 • PRICE 10 CENTS

Delaware County's Own Picture Magazine



NANCY WEATHERS of Media took the spotlight when she officially opened the new cloverleaf intersection on U. S. 1



NEW CLOVER-LEAF AT BLACK HORSE DEDICATED

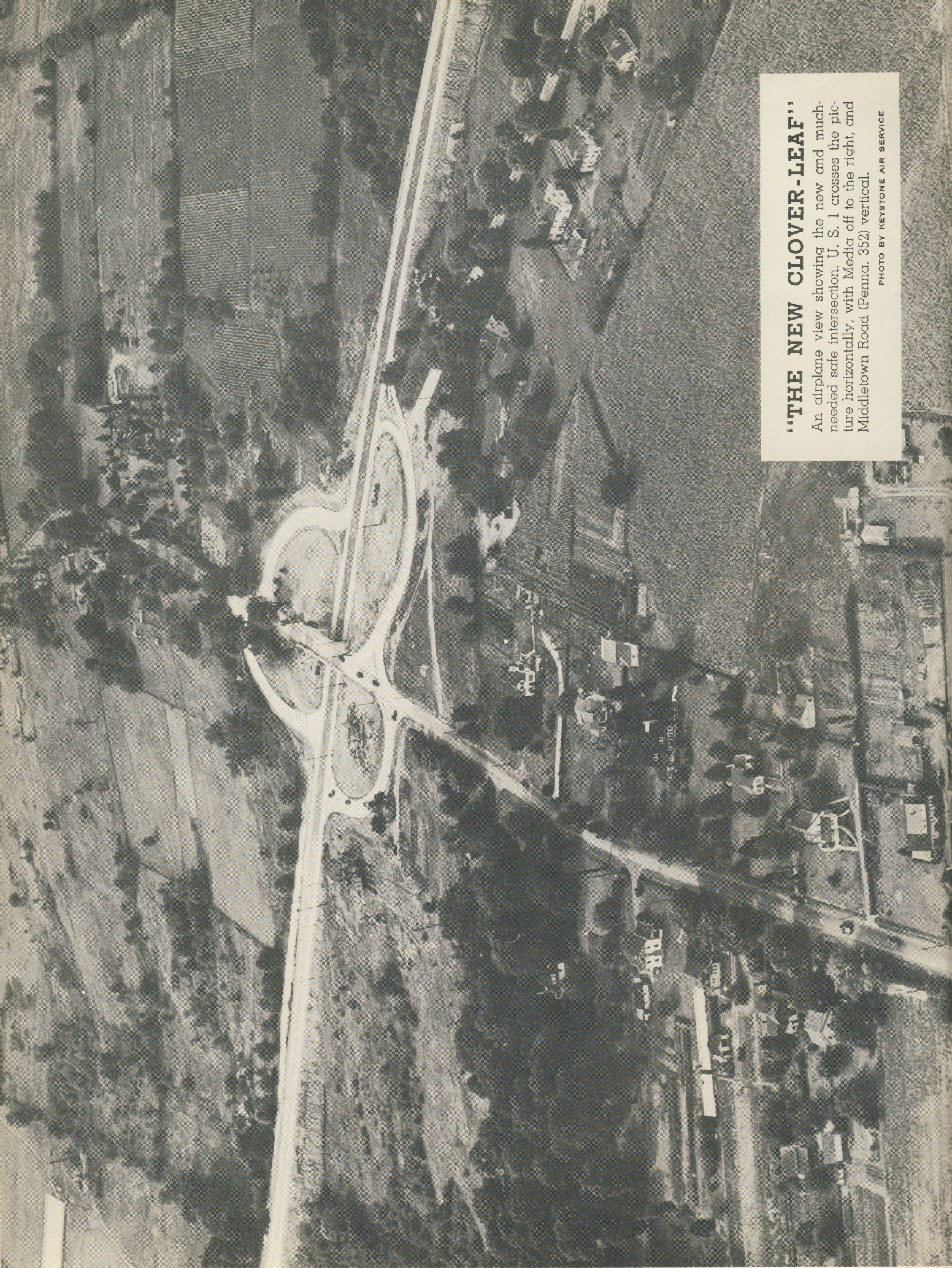
ADVOCATE PHOTOS

For almost a year the rumor spread through the county that the old Black Horse Tavern was to be demolished to make way for an elaborate new crossing. Never could the rumor be confirmed. Then, suddenly last fall work actually began. The Black Horse Tavern did disappear and a splendid new cloverleaf intersection took its place. On the last day of August the new stretch of road on U. S. 1 beyond Media was opened with fitting ceremony.

(Above) **STAR** of the ceremony was little Nancy Weathers who cut the ribbon formally opening the road. With her are Thomas C. Frame, her uncles and grandfather, contractor Skelly, and Commissioner James B. Miller.

(Below) The parade of official cars from Media approaches the new intersection and traverses its every curve.





“THE NEW CLOVER-LEAF”

An airplane view showing the new and much-needed safe intersection. U. S. 1 crosses the picture horizontally, with Media off to the right, and Middletown Road (Penna. 352) vertical.

PHOTO BY KEYSTONE AIR SERVICE

(Right) **CONTRACTORS** who supervised the building of the bridge and road, James J. Skelly, center, and his sons, Joseph J. and J. Paul Skelly.

(Below) **SKELLY** addresses the hundreds of people gathered to witness the ceremonies.



(Below) **THE PARADE** of cars passes under the new bridge.

